

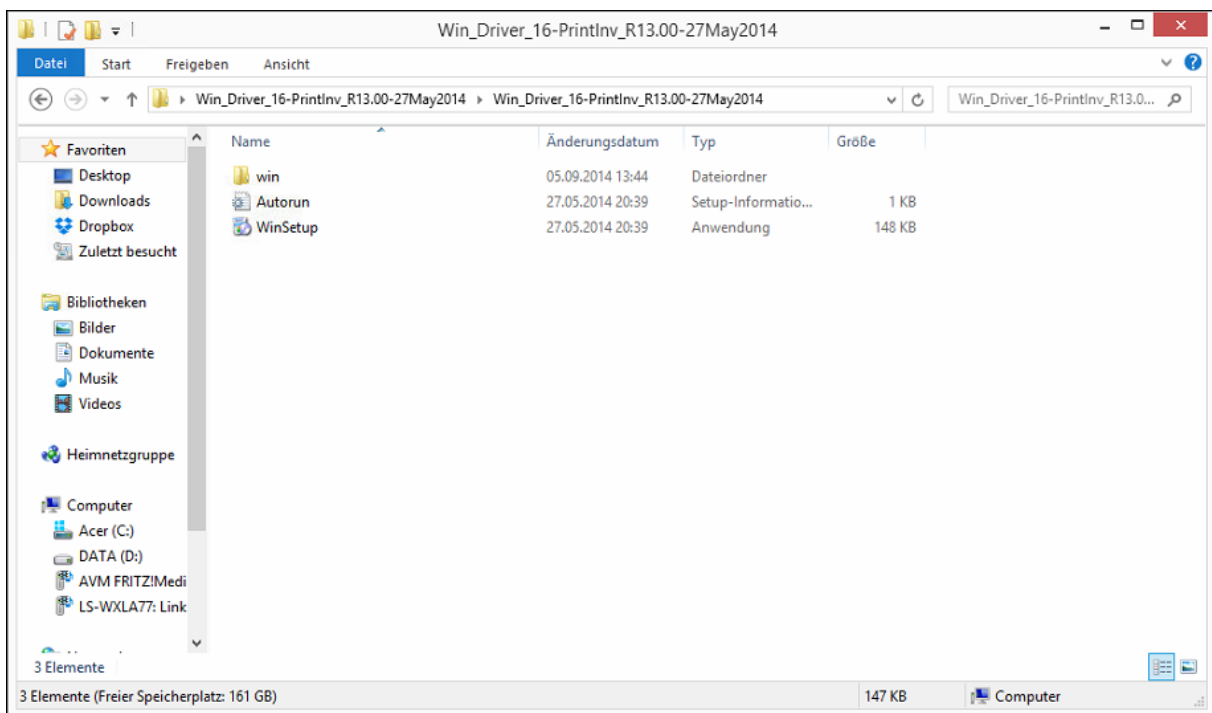
Ways of Installation as Network Printer:

1. Connect the iCube via Network-Cable with your Network. The Router/Switch/Server will assign an IP-Address to the Printer(DHCP).
2. Then Install the Driver like below.

iCube 2 and 3 only:

1. Set an IP over the Interface of the Display and install the Driver.
2. The Driver will automatically detect the IP-Settings.

1. Insert the Driver CD and open the directory "Win_Driver_R13.00". The execute the file "WinSetup.exe"



2. Windows will ask for permission. Click "Yes" to start the Setup.

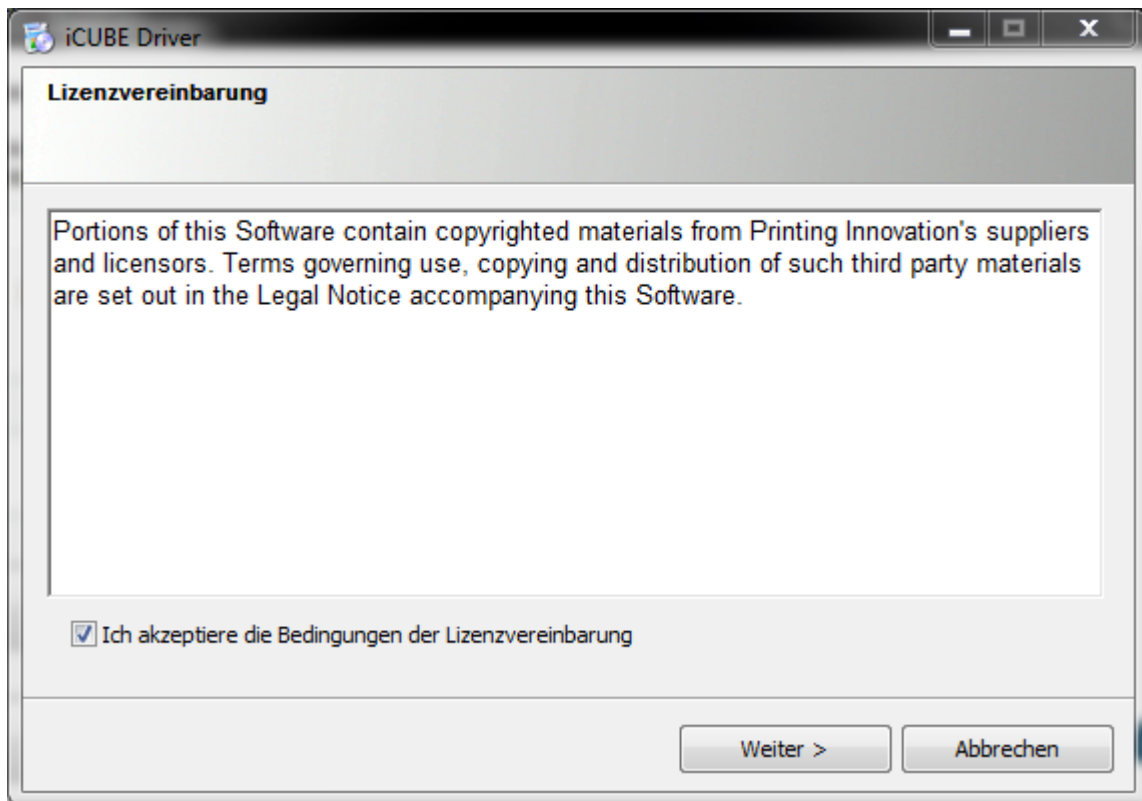


3. Setup starts now.

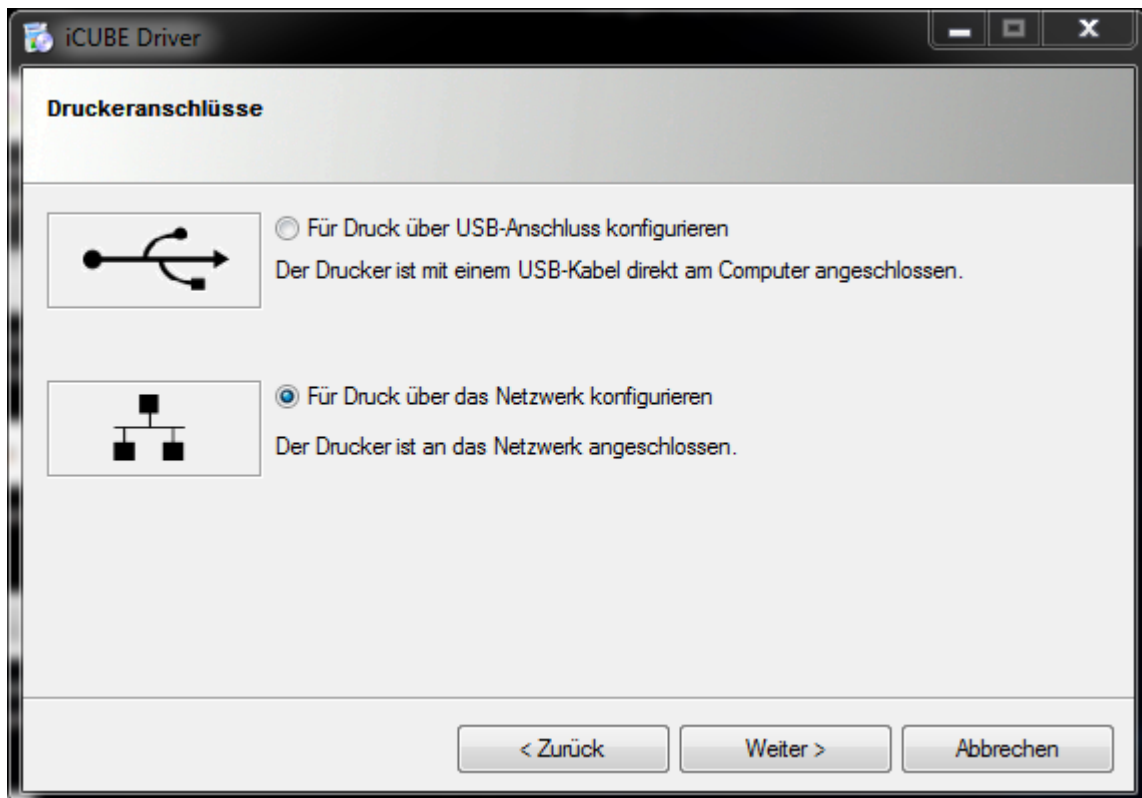
4. Click on "Install Printer Software"



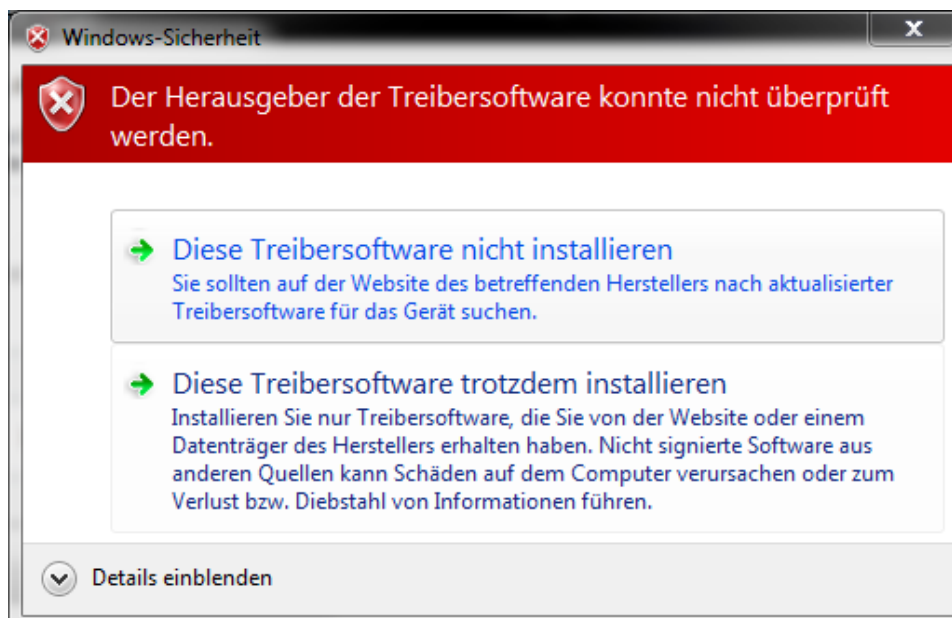
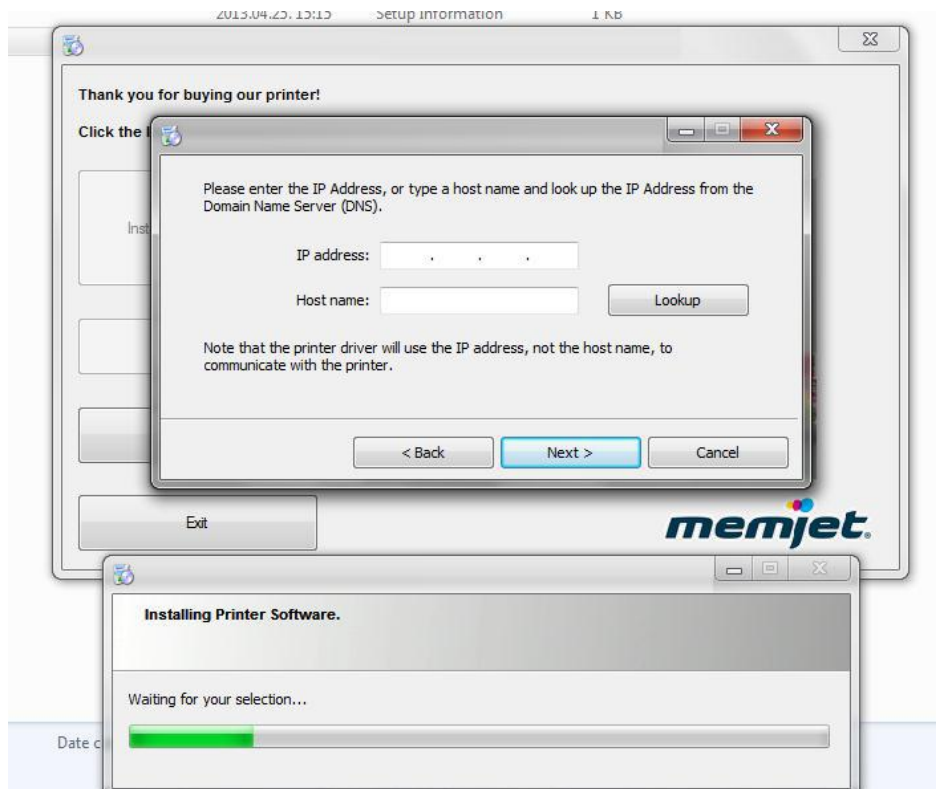
5. Accept the License Agreement and click on "Next".



6. Choose „Configure to print over Network“

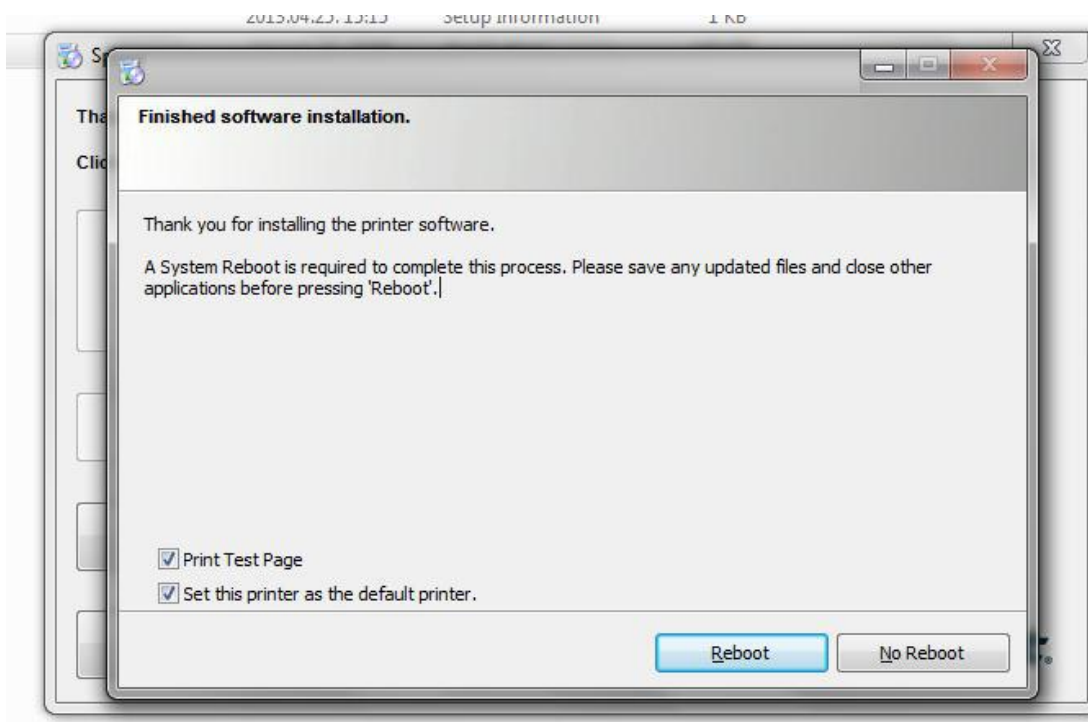


7. The Setup automatically detects the IP-Settings because DHCP is set by default. You can set the IP-Settings if you want to manually set the IP. Then you need to insert the IP-Settings into the fields below.

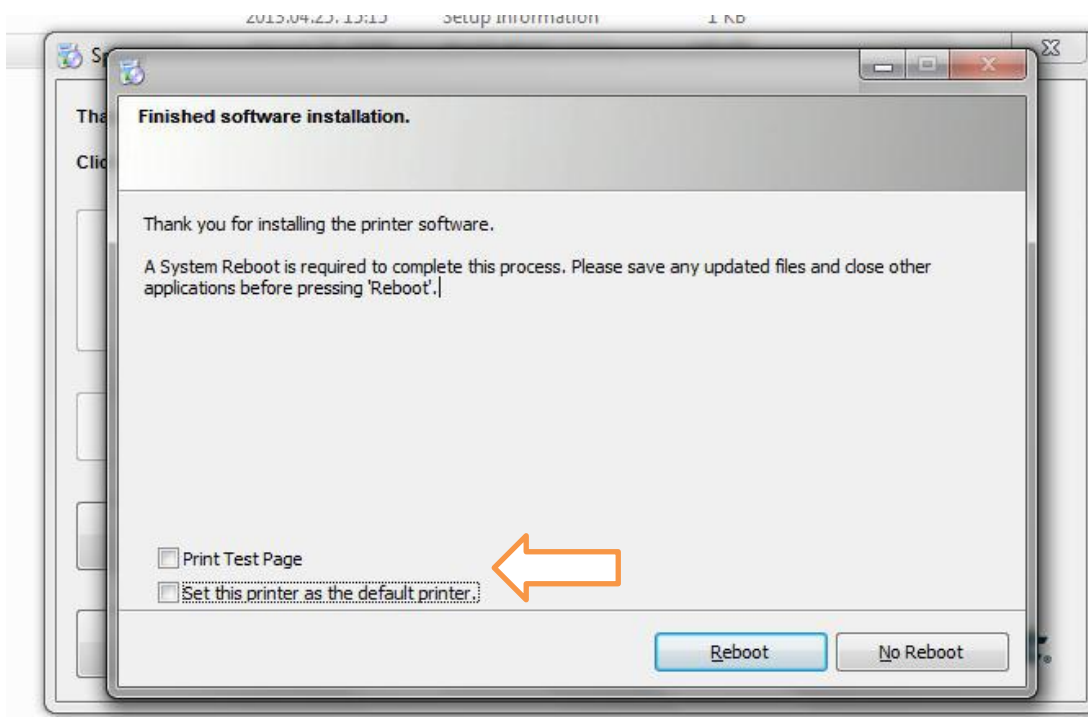


Click "Install Driver" when the Windows Security Window shows up.

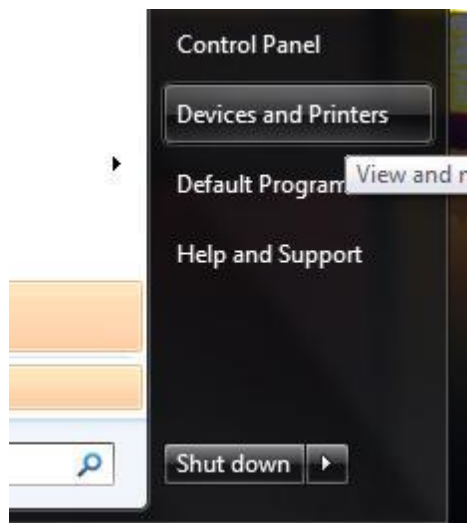
11. After the Installation you will see the Window below.



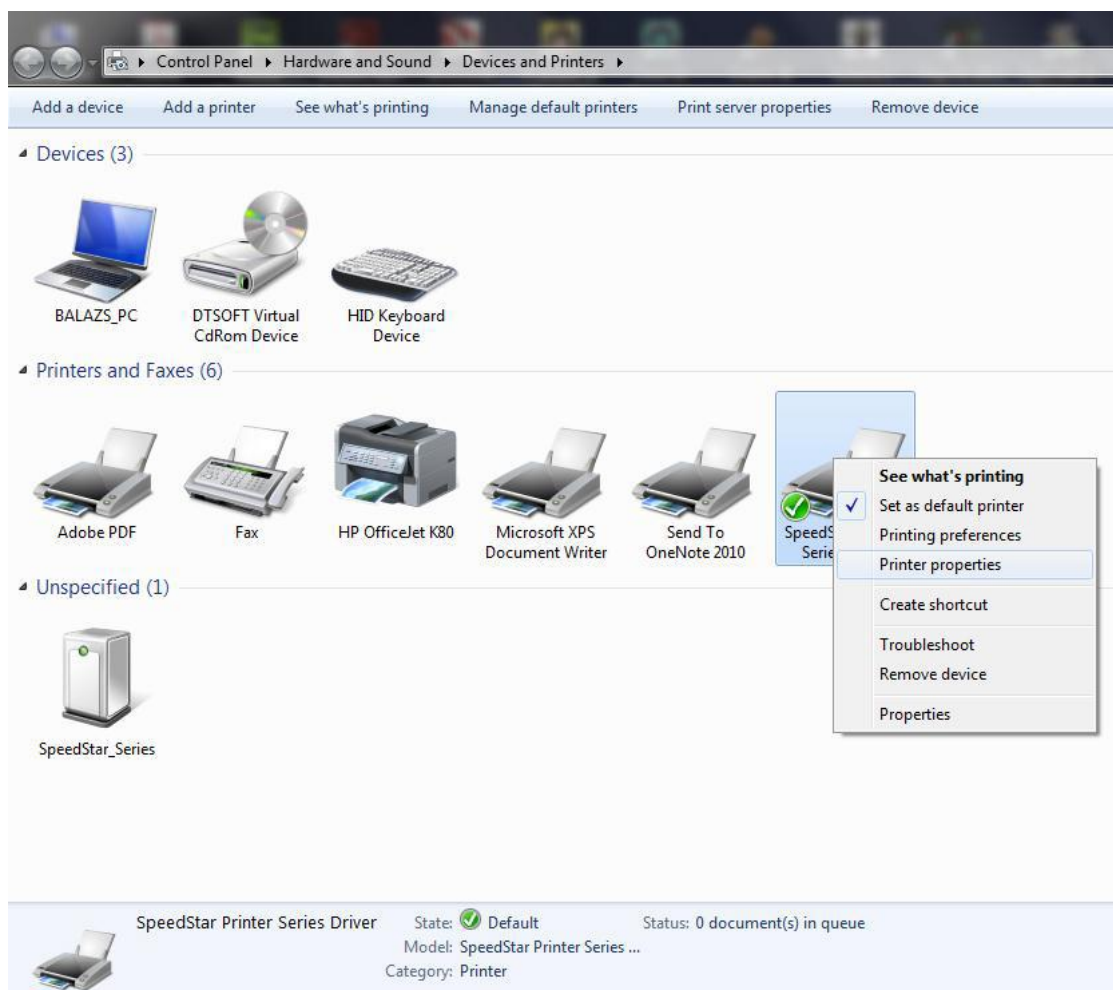
12. Disable "Print Test Page" and "Set this printer as the default printer" and click on "Reboot". Now your PC will restart.



13. After the Restart open the Start Menu and click on "Devices and Printers"



14. Now you will see the iCube in the List „Printers and Faxes“. Click



15. Click on the Tab “Ports” and disable “Enable bidirectional support”.

