



Product Management

TECHNICAL BULLETIN

Printing to the Kiaro! QL-120 from NiceLabel Software

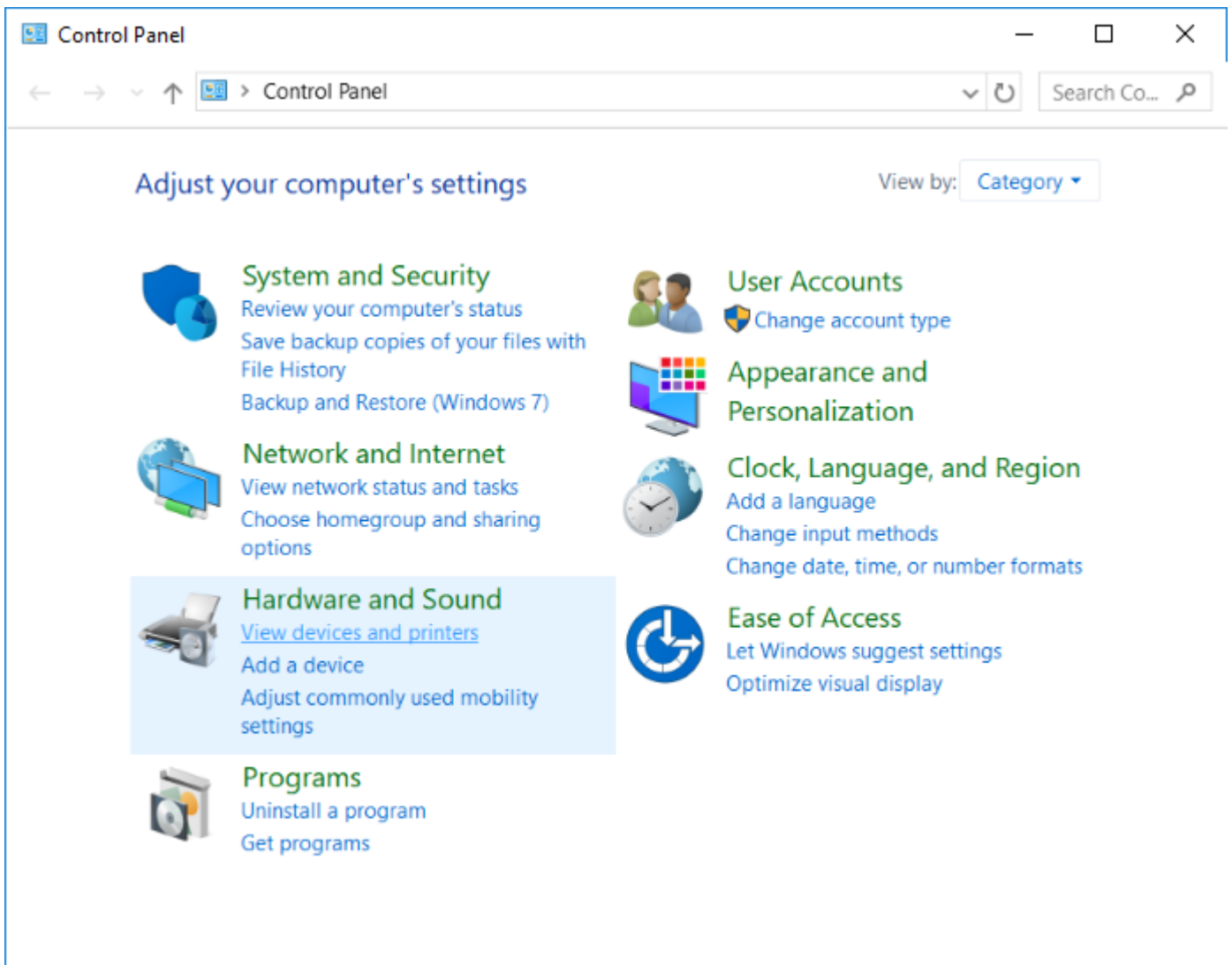
September 10, 2018

Printing to the Kiaro! QL-120 from NiceLabel Software

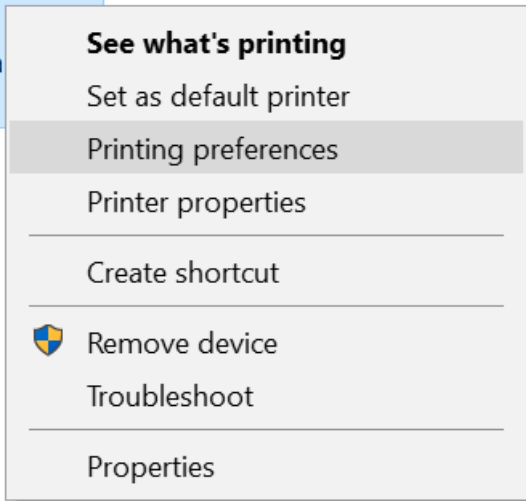
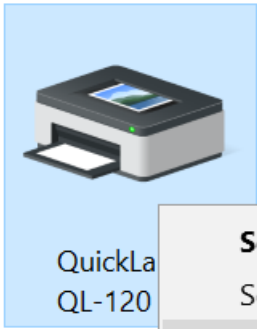
Important: It is necessary to create the label size in the QL-120 driver before designing a NiceLabel file for the QL-120. Otherwise, the QL-120 cannot be selected when designing a label.

Steps and Procedure:

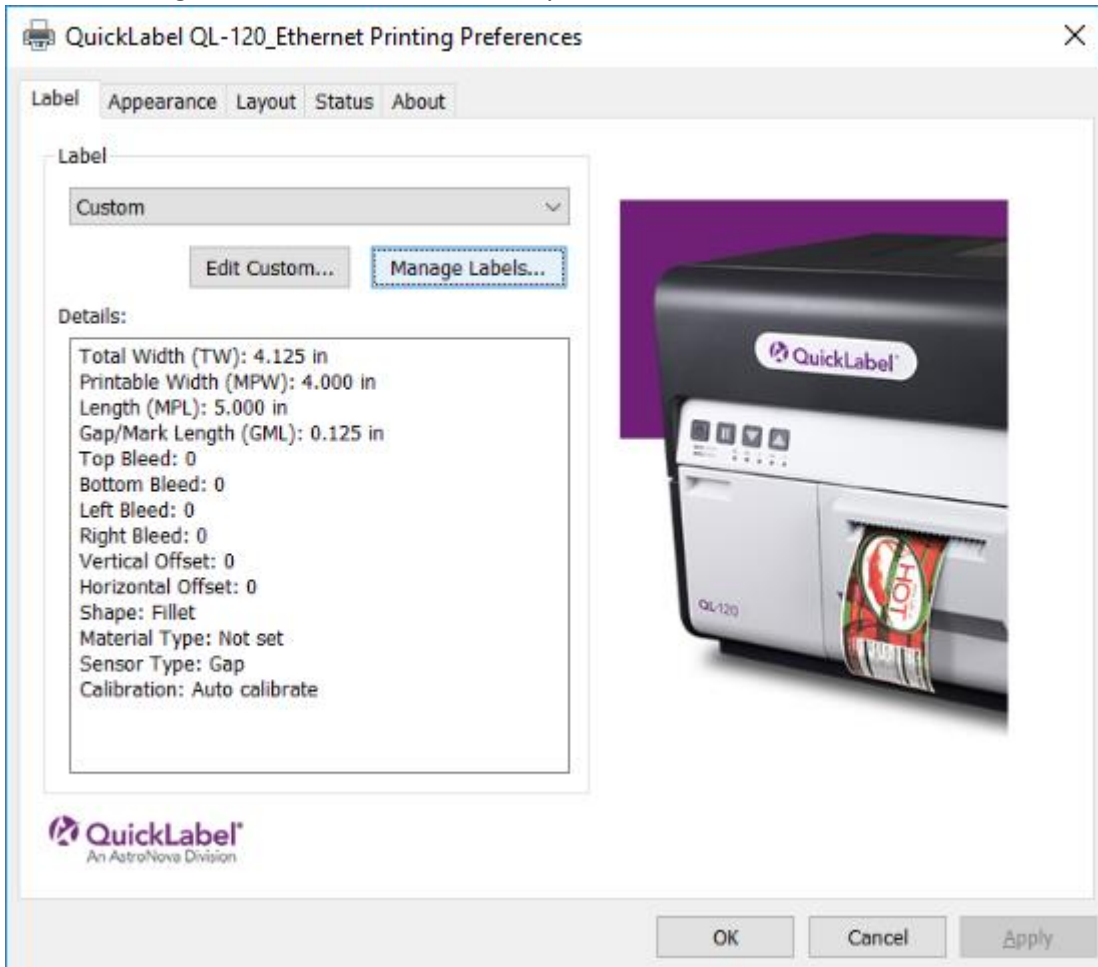
1- Open Control Panel and select Hardware and Sounds > View Devices and Printers.



2- Select the QL-120 > right click on it > and select Printing Preferences.



3- Click on Manage Labels and add the size that you desire to the driver.



- 4- Enter the label dimensions and ensure to select the correct Media and Sensor type then click Add. In this example the size of the label is 3"x4".

Manage Labels [X]

3"x4"

Add
Modify
Delete
Import...
Export...

Basics
Name: 3"x4"
Total Width (TW): 3.125 1.000 - 4.527
Printable Width (MPW): 3.000 0.749 - 4.169
Length (MPL): 4 0.237 - 30.000

Material
Type: Gloss Paper
Sensor: Gap
Gap/Mark Length (GML): 0.125
Calibration: Auto calibrate
Shape: Fillet

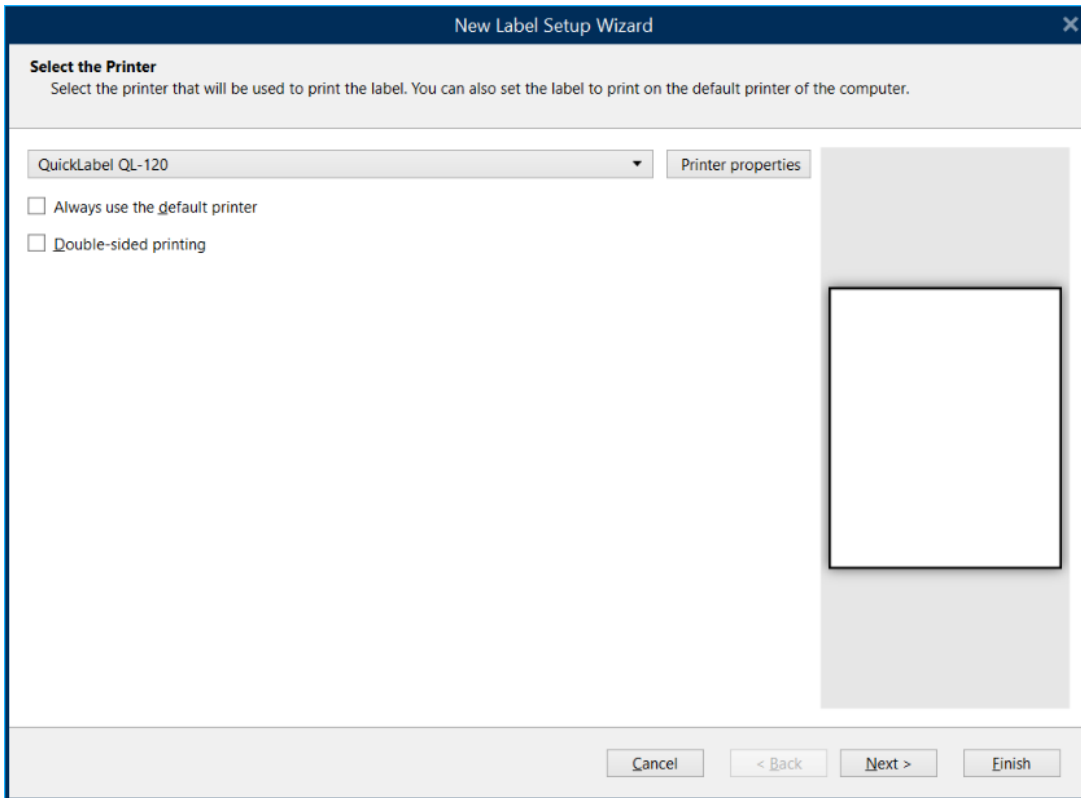
Units
 inches
 mm

Bleed Control
Top Bleed: 0 Bottom Bleed: 0
Left Bleed: 0 Right Bleed: 0

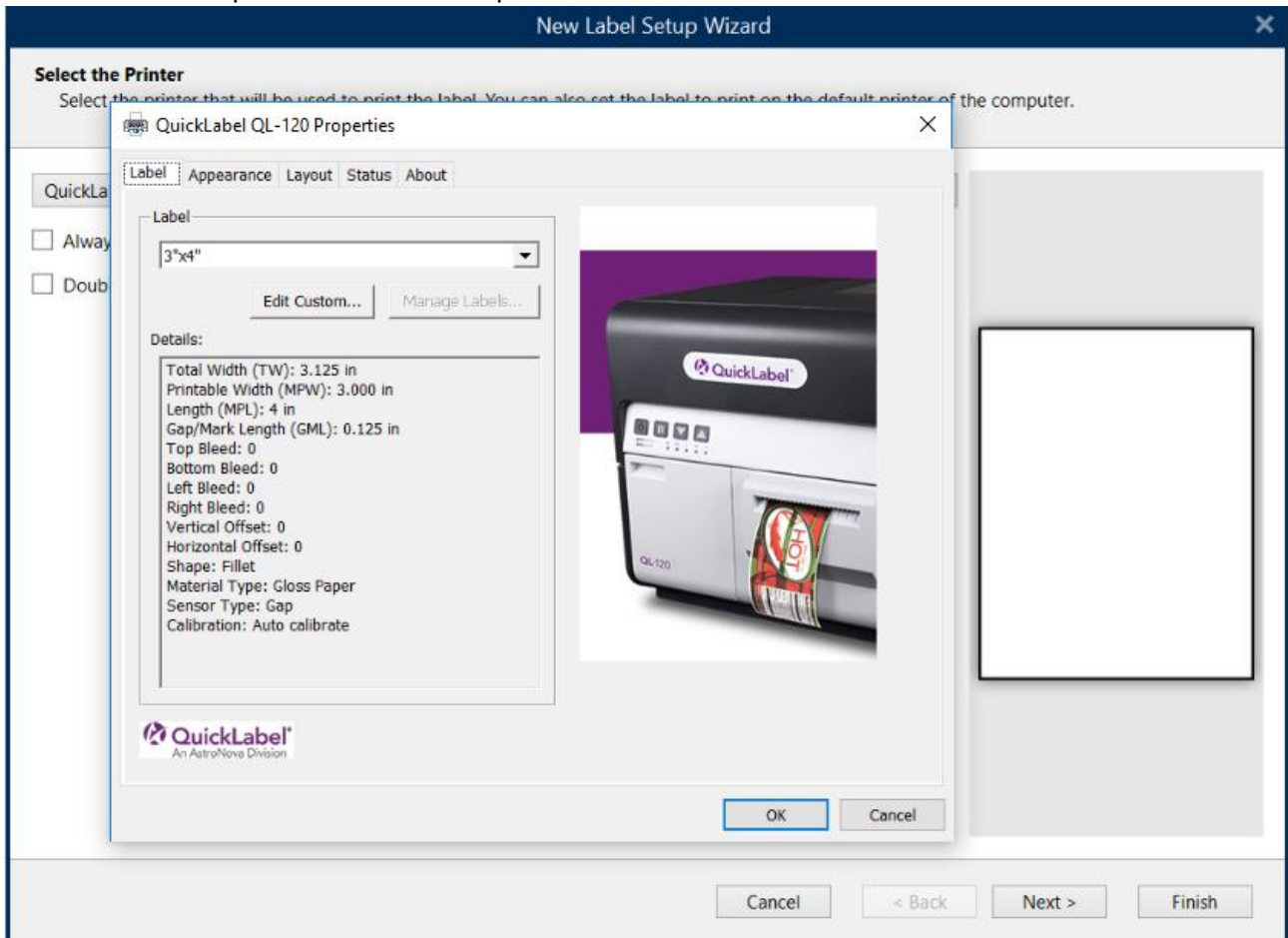
Offsets
Vertical Offset: 0 0.000 in
Horizontal Offset: 0 0.000 in

Where do I find these values? Close

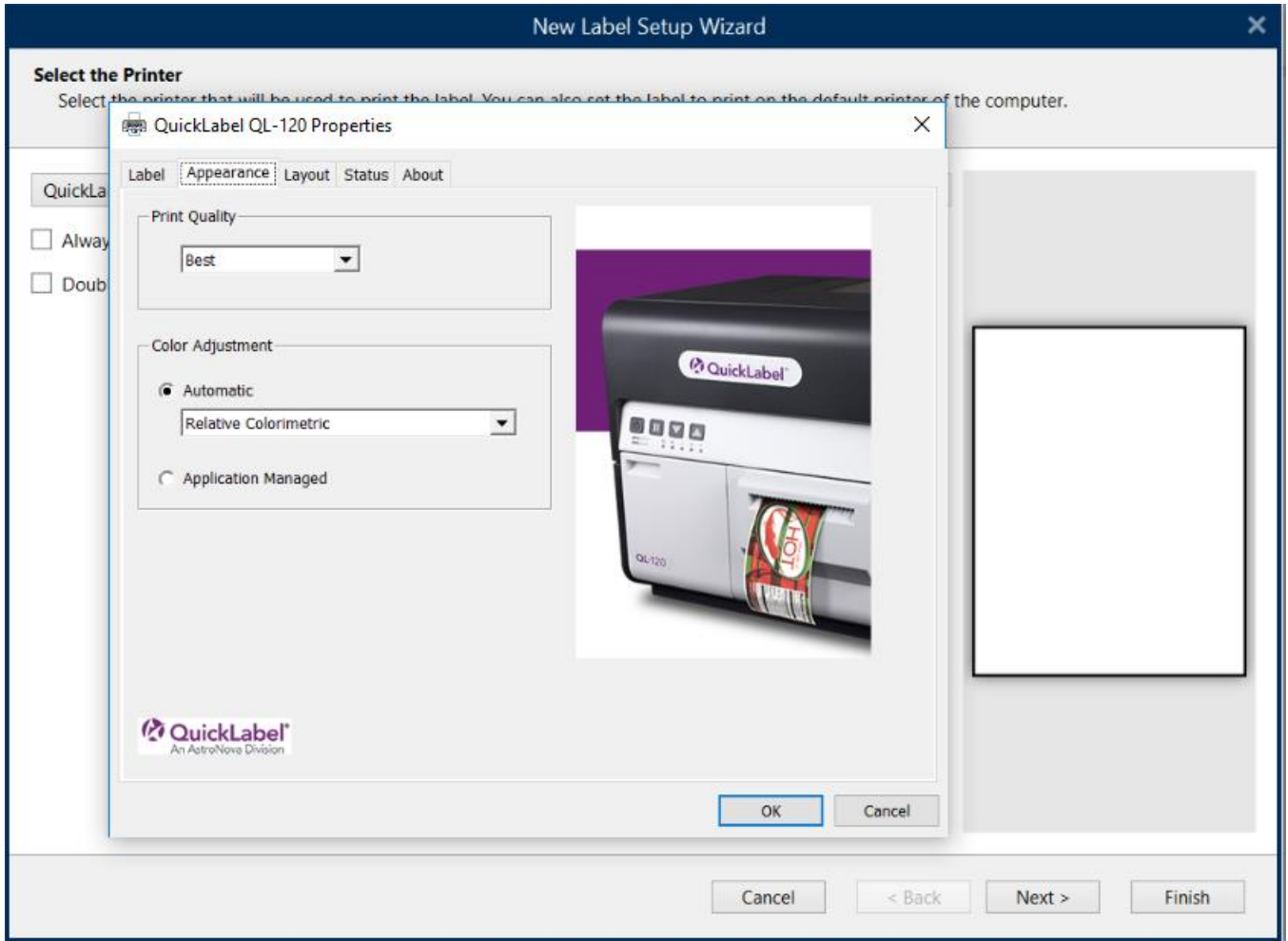
- 5- Launch NiceLabel Designer Pro and Click on Create a New Label, then select the QL-120 printer.



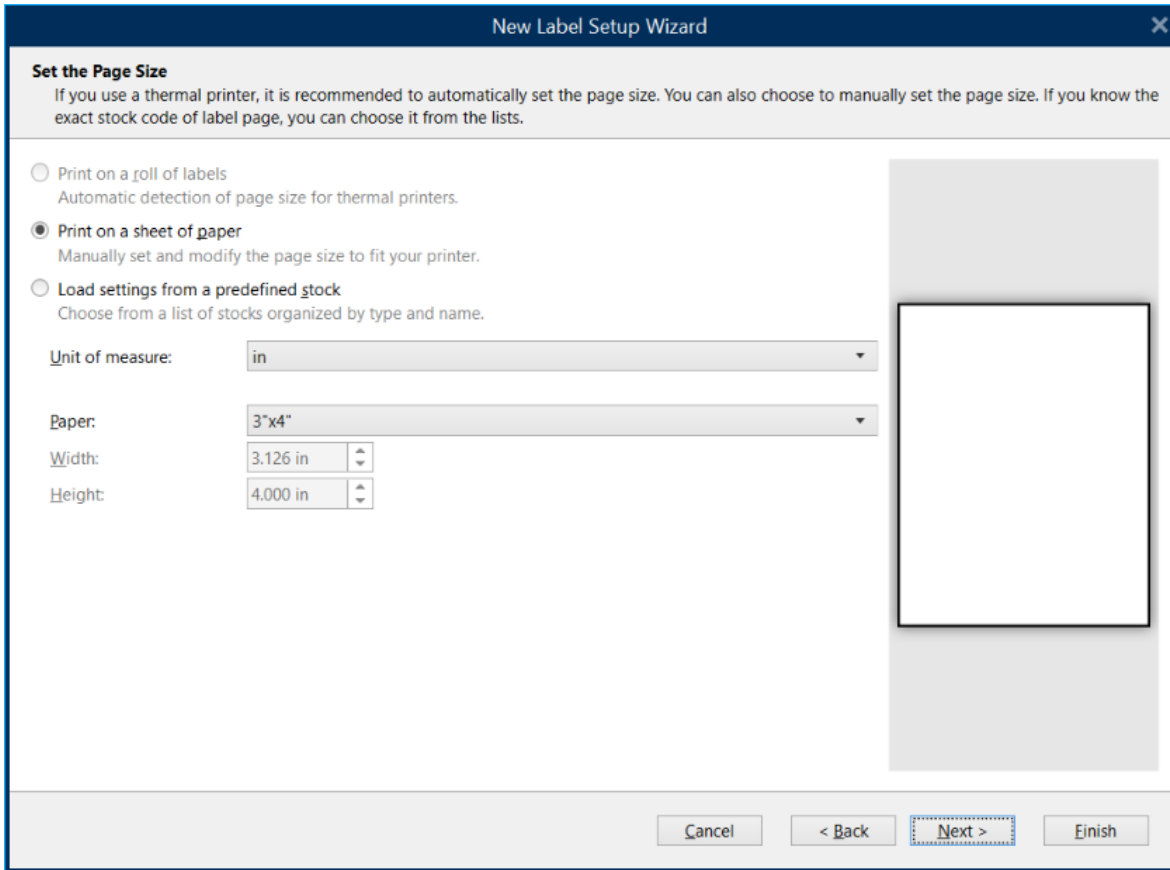
6- Click on Printer Properties and select the profile that was created for 3"x4" label.



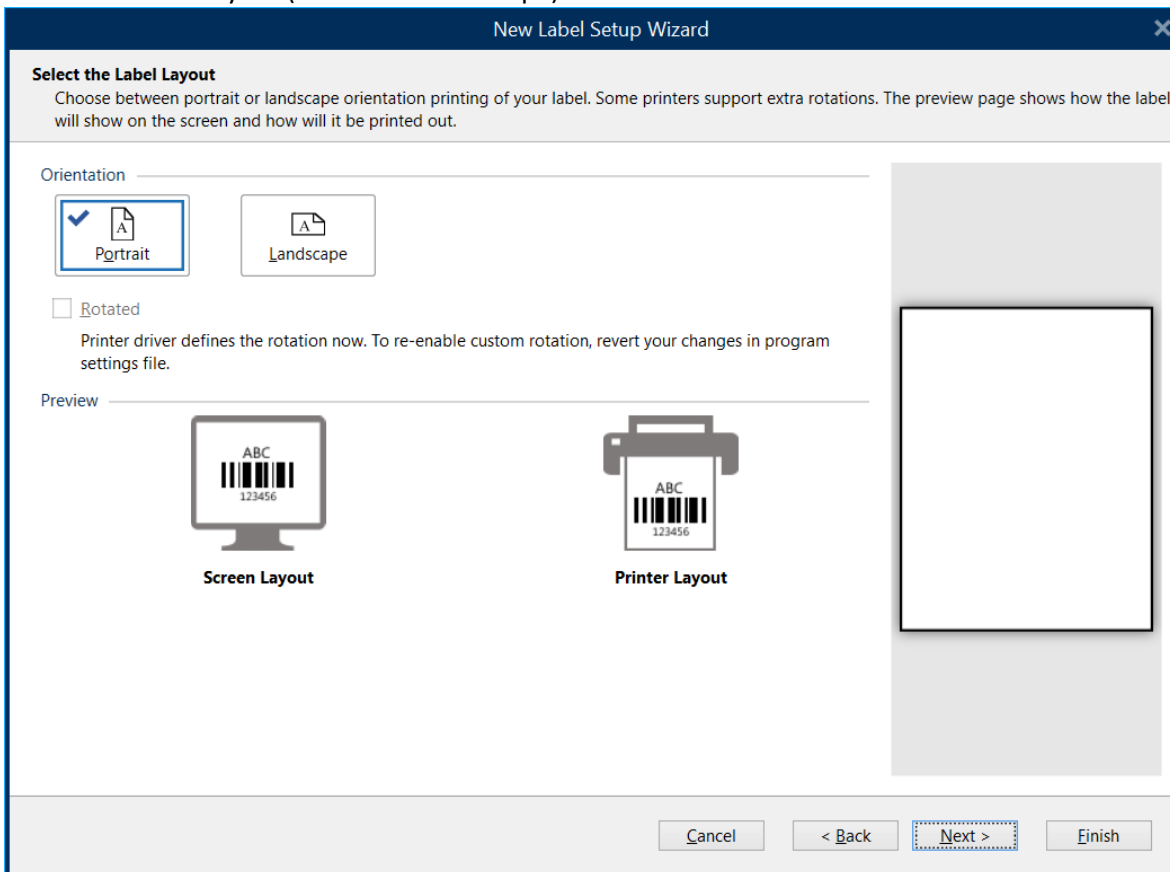
- 7- Click on the Appearance tab, set the Print Quality to Best and set the Color Adjustment to Automatic > Relative Colorimetric or Perceptual for best output. Click Ok to close the QL-120 Printer Properties window then click Next.



- 8- Set the Page Size, Select Print on a sheet of paper, and Set the unit of measure to inches.
9- Under Paper, select the size that was created in the driver (3"x4") and click Next.



10- Select the Label Layout (Portrait or Landscape) and click Next.



- 11- Specify the label dimensions. Change the label width to 3" which is the MPW of the physical label and set the left margin to 0.063" this is the width of the left edge trim (liner).

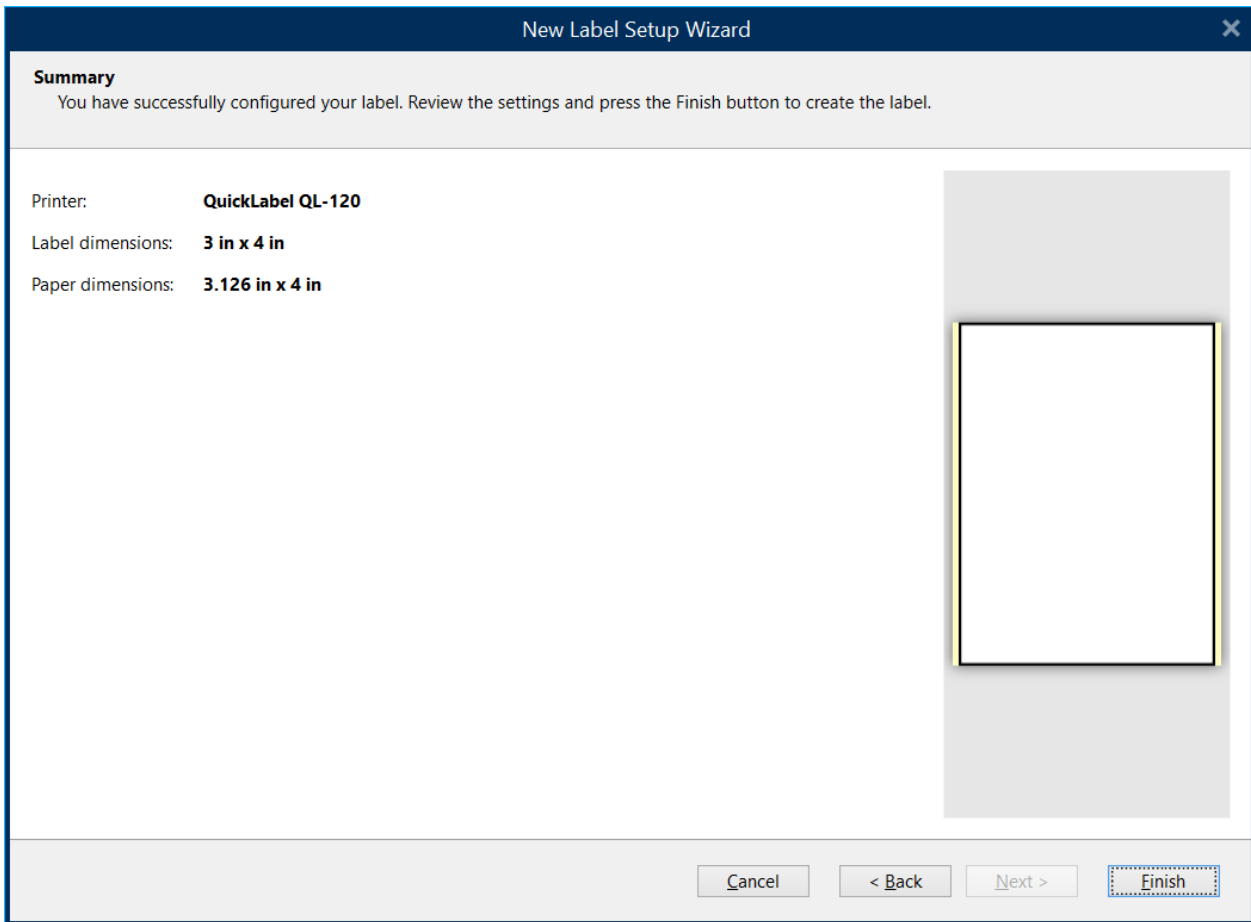
The screenshot shows the 'New Label Setup Wizard' dialog box, specifically the 'Specify the Label Dimensions' step. The dialog has a title bar with 'New Label Setup Wizard' and a close button. Below the title bar, there is a section titled 'Specify the Label Dimensions' with a subtitle: 'These dimensions were automatically set based on your printer or stock selection. You can fine-tune these dimensions if they differ from the actual printed label.'

The settings are organized into several sections:

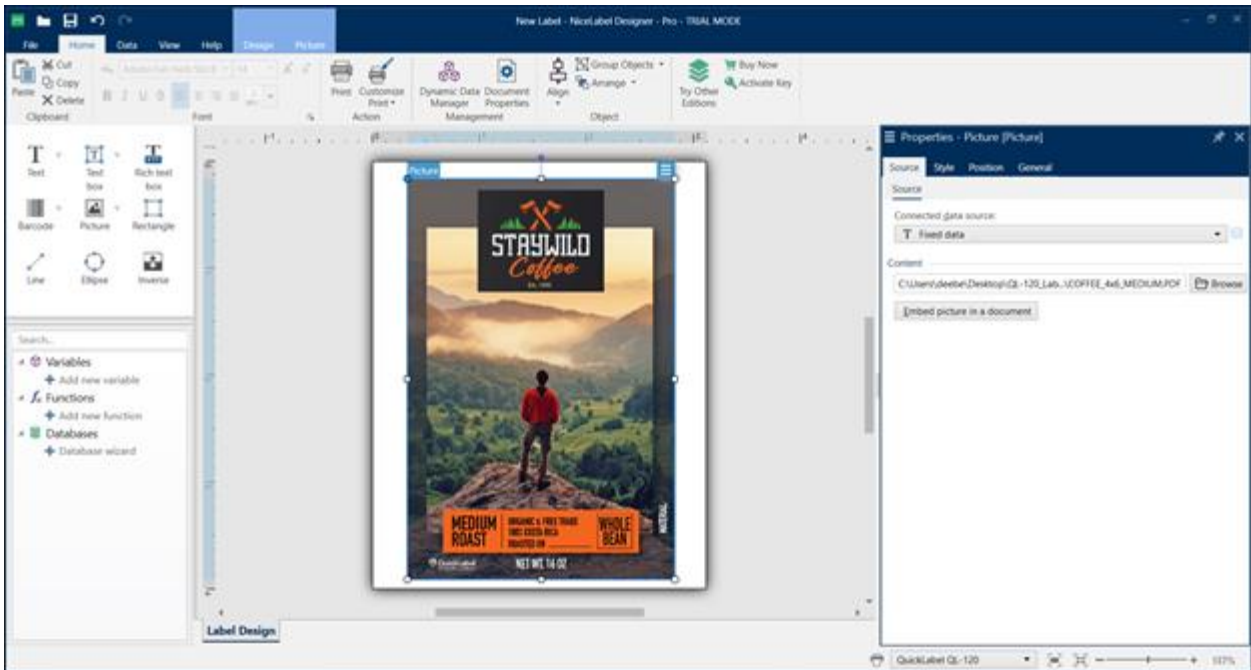
- Unit of measure:** A dropdown menu set to 'in'.
- Label Dimensions:** Two input fields: 'Width' set to '3.000 in' and 'Height' set to '4.000 in'.
- Margins:** Four input fields: 'Left' set to '0.063 in', 'Right' set to '0.000 in', 'Top' set to '0.000 in', and 'Bottom' set to '0.000 in'.
- Labels Across:** Four input fields: 'Horizontal count' set to '1', 'Vertical count' set to '1', 'Horizontal gap' set to '0.000 in', and 'Vertical gap' set to '0.000 in'.
- Processing order:** A dropdown menu set to 'Horizontally - start at top left'.

On the right side of the dialog, there is a preview window showing a white rectangular label with a thin black border, positioned on a light gray background. At the bottom of the dialog, there are four buttons: 'Cancel', '< Back', 'Next >', and 'Finish'.

- 12- Review the label and paper information under Summary then click Finish.



13- Insert fields to the label.



14- Click File > Print > Set the quantity then send a print job to the QL-120.